

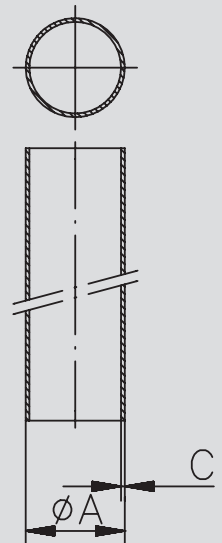
Art.-Nr. 800-

AISI 304/304L-1.4301/1.4307

Getränkeleitungsrohr
DIN 11850 und Zoll

пищевая нержавеющая труба DIN 11850 и дюйм

| DN | A | B | C | D | E | Gew. | Art.-Nr. | Preis | Art.-Nr. | Preis | Art.-Nr. | Preis | Art.-Nr. | Preis |
|-------|-------|------|----|----|----|-------|------------|-------|------------|-------|------------|-------|------------|-------|
| mm | mm | mm | mm | mm | mm | kg/m | CC | EUR | CD | EUR | BC | EUR | BD | EUR |
| 15 | 18,0 | 1,50 | | | | 0,620 | -101801502 | | -201801502 | | -301801502 | | -401801502 | |
| 15 | 19,0 | 1,50 | | | | 0,657 | -101901502 | | -201901502 | | -301901502 | | -401901502 | |
| 20 | 22,0 | 1,00 | | | | 0,526 | -102201002 | | -202201002 | | -302201002 | | -402201002 | |
| 20 | 22,0 | 1,50 | | | | 0,770 | -102201502 | | -202201502 | | -302201502 | | -402201502 | |
| 20 | 23,0 | 1,50 | | | | 0,808 | -102301502 | | -202301502 | | -302301502 | | -402301502 | |
| 1" | 25,4 | 1,20 | | | | 0,727 | -102541202 | | -202541202 | | -302541202 | | -402541202 | |
| 1" | 25,4 | 1,50 | | | | 0,898 | -102541502 | | -202541502 | | -302541502 | | -402541502 | |
| 25 | 28,0 | 1,00 | | | | 0,676 | -102801002 | | -202801002 | | -302801002 | | -402801002 | |
| 25 | 28,0 | 1,50 | | | | 0,995 | -102801502 | | -202801502 | | -302801502 | | -402801502 | |
| 25 | 29,0 | 1,50 | | | | 1,033 | -102901502 | | -202901502 | | -302901502 | | -402901502 | |
| 1,25" | 31,8 | 1,25 | | | | 0,956 | -103181252 | | -203181252 | | -303181252 | | -403181252 | |
| 1,25" | 31,8 | 1,50 | | | | 1,138 | -103181502 | | -203181502 | | -303181502 | | -403181502 | |
| 32 | 34,0 | 1,00 | | | | 0,826 | -103401002 | | -203401002 | | -303401002 | | -403401002 | |
| 32 | 34,0 | 1,50 | | | | 1,221 | -103401502 | | -203401502 | | -303401502 | | -403401502 | |
| 32 | 35,0 | 1,50 | | | | 1,258 | -103501502 | | -203501502 | | -303501502 | | -403501502 | |
| 1,5" | 38,1 | 1,25 | | | | 1,153 | -103811252 | | -203811252 | | -303811252 | | -403811252 | |
| 1,5" | 38,1 | 1,50 | | | | 1,375 | -103811502 | | -203811502 | | -303811502 | | -403811502 | |
| 40 | 40,0 | 1,00 | | | | 0,977 | -104001002 | | -204001002 | | -304001002 | | -404001002 | |
| 40 | 40,0 | 1,50 | | | | 1,446 | -104001502 | | -204001502 | | -304001502 | | -404001502 | |
| 40 | 41,0 | 1,50 | | | | 1,484 | -104101502 | | -204101502 | | -304101502 | | -404101502 | |
| 2" | 50,8 | 1,25 | | | | 1,551 | -105081252 | | -205081252 | | -305081252 | | -405081252 | |
| 2" | 50,8 | 1,50 | | | | 1,852 | -105081502 | | -205081502 | | -305081502 | | -405081502 | |
| 50 | 52,0 | 1,00 | | | | 1,277 | -105201002 | | -205201002 | | -305201002 | | -405201002 | |
| 50 | 52,0 | 1,50 | | | | 1,897 | -105201502 | | -205201502 | | -305201502 | | -405201502 | |
| 50 | 53,0 | 1,50 | | | | 1,934 | -105301502 | | -205301502 | | -305301502 | | -405301502 | |
| 2,5" | 63,5 | 1,50 | | | | 2,329 | -106351502 | | -206351502 | | -306351502 | | -406351502 | |
| 65 | 70,0 | 2,00 | | | | 3,405 | -107002002 | | -207002002 | | -307002002 | | -407002002 | |
| 3" | 76,1 | 1,50 | | | | 2,984 | -107611502 | | -207611502 | | -307611502 | | -407611502 | |
| 3" | 76,1 | 2,00 | | | | 3,711 | -107612002 | | -207612002 | | -307612002 | | -407612002 | |
| 80 | 85,0 | 2,00 | | | | 4,157 | -108502002 | | -208502002 | | -308502002 | | -408502002 | |
| 4" | 101,6 | 1,50 | | | | 3,760 | -110161502 | | -210161502 | | -310161502 | | -410161502 | |
| 4" | 101,6 | 2,00 | | | | 4,988 | -110162002 | | -210162002 | | -310162002 | | -410162002 | |
| 100 | 104,0 | 2,00 | | | | 5,108 | -110402002 | | -210402002 | | -310402002 | | -410402002 | |
| 125 | 129,0 | 2,00 | | | | 6,360 | -112902002 | | -212902002 | | -312902002 | | -412902002 | |
| 150 | 154,0 | 2,00 | | | | 7,612 | -115402002 | | -215402002 | | -315402002 | | -415402002 | |



CC: ungeglüht matt - CD: ungeglüht geschliffen - BC: geüht matt - BD: geüht geschliffen

CC: некалёная матовая - CD: некалёная шлифованная - BC: калёная матовая - BD: калёная шлифованная

Preis auf Anfrage

цена по запросу

8.04. Vierkantrohr AISI 316L

8.04. прямоугольная труба AISI 316L

Vierkant-/
Rechteckrohr
geschweißt

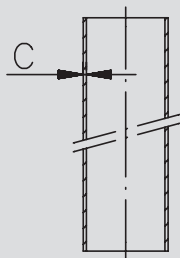
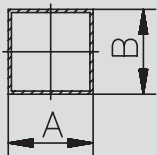
Art.-Nr. 81-

AISI 316 L-1.4404

| DN | A | B | C | D | E | Gew. |
|-------------|-------|-------|-----|----|----|-------|
| mm | mm | mm | mm | mm | mm | kg/m |
| 15x15x1,5 | 15,0 | 15,0 | 1,5 | | | 0,660 |
| 20x10x1,5 | 20,0 | 10,0 | 1,5 | | | 0,660 |
| 20x20x1,5 | 20,0 | 20,0 | 1,5 | | | 0,883 |
| 25x15x1,5 | 25,0 | 15,0 | 1,5 | | | 0,883 |
| 25x25x1,5 | 25,0 | 25,0 | 1,5 | | | 1,146 |
| 30x15x1,5 | 30,0 | 15,0 | 1,5 | | | 0,995 |
| 30x20x1,5 | 30,0 | 20,0 | 1,5 | | | 1,146 |
| 30x30x1,5 | 30,0 | 30,0 | 1,5 | | | 1,371 |
| 40x20x1,5 | 40,0 | 20,0 | 1,5 | | | 1,371 |
| 40x30x1,5 | 40,0 | 30,0 | 1,5 | | | 1,620 |
| 40x40x1,5 | 40,0 | 40,0 | 1,5 | | | 1,859 |
| 50x25x1,5 | 50,0 | 25,0 | 1,5 | | | 1,758 |
| 50x30x1,5 | 50,0 | 30,0 | 1,5 | | | 1,859 |
| 50x50x1,5 | 50,0 | 50,0 | 1,5 | | | 2,329 |
| 60x30x1,5 | 60,0 | 30,0 | 1,5 | | | 2,122 |
| 60x40x1,5 | 60,0 | 40,0 | 1,5 | | | 2,329 |
| 20x20x2,0 | 20,0 | 20,0 | 2,0 | | | 1,152 |
| 25x25x2,0 | 25,0 | 25,0 | 2,0 | | | 1,495 |
| 30x20x2,0 | 30,0 | 20,0 | 2,0 | | | 1,495 |
| 30x30x2,0 | 30,0 | 30,0 | 2,0 | | | 1,840 |
| 35x35x2,0 | 35,0 | 35,0 | 2,0 | | | 2,150 |
| 40x20x2,0 | 40,0 | 20,0 | 2,0 | | | 1,840 |
| 40x30x2,0 | 40,0 | 30,0 | 2,0 | | | 2,150 |
| 40x40x2,0 | 40,0 | 40,0 | 2,0 | | | 2,454 |
| 50x20x2,0 | 50,0 | 20,0 | 2,0 | | | 2,150 |
| 50x25x2,0 | 50,0 | 25,0 | 2,0 | | | 2,319 |
| 50x30x2,0 | 50,0 | 30,0 | 2,0 | | | 2,454 |
| 50x50x2,0 | 50,0 | 50,0 | 2,0 | | | 3,080 |
| 60x30x2,0 | 60,0 | 30,0 | 2,0 | | | 2,804 |
| 60x40x2,0 | 60,0 | 40,0 | 2,0 | | | 3,080 |
| 60x60x2,0 | 60,0 | 60,0 | 2,0 | | | 3,711 |
| 80x40x2,0 | 80,0 | 40,0 | 2,0 | | | 3,711 |
| 80x60x2,0 | 80,0 | 60,0 | 2,0 | | | 4,380 |
| 80x80x2,0 | 80,0 | 80,0 | 2,0 | | | 4,988 |
| 100x40x2,0 | 100,0 | 40,0 | 2,0 | | | 4,380 |
| 100x50x2,0 | 100,0 | 50,0 | 2,0 | | | 4,680 |
| 100x60x2,0 | 100,0 | 60,0 | 2,0 | | | 4,960 |
| 100x100x2,0 | 100,0 | 100,0 | 2,0 | | | 6,400 |
| 30x30x3,0 | 30,0 | 30,0 | 3,0 | | | 2,720 |
| 40x40x3,0 | 40,0 | 40,0 | 3,0 | | | 3,756 |
| 50x30x3,0 | 50,0 | 30,0 | 3,0 | | | 3,756 |
| 50x50x3,0 | 50,0 | 50,0 | 3,0 | | | 4,650 |
| 60x40x3,0 | 60,0 | 40,0 | 3,0 | | | 4,650 |
| 60x60x3,0 | 60,0 | 60,0 | 3,0 | | | 5,491 |
| 80x40x3,0 | 80,0 | 40,0 | 3,0 | | | 5,491 |
| 80x60x3,0 | 80,0 | 60,0 | 3,0 | | | 6,530 |
| 80x80x3,0 | 80,0 | 80,0 | 3,0 | | | 7,530 |
| 100x40x3,0 | 100,0 | 40,0 | 3,0 | | | 6,530 |
| 100x50x3,0 | 100,0 | 50,0 | 3,0 | | | 6,864 |
| 100x60x3,0 | 100,0 | 60,0 | 3,0 | | | 7,344 |
| 100x80x3,0 | 100,0 | 80,0 | 3,0 | | | 8,304 |
| 100x100x3,0 | 100,0 | 100,0 | 3,0 | | | 9,530 |

| Art.-Nr. geschliffen | Preis EUR | Art.-Nr. matt | Preis EUR |
|-------------------------|--------------|------------------|--------------|
| -1501500153 | | -1501500154 | |
| -1502000103 | | -1502000104 | |
| -1502000203 | | -1502000204 | |
| -1502500153 | | -1502500154 | |
| -1502500253 | | -1502500254 | |
| -1503000153 | | -1503000154 | |
| -1503000203 | | -1503000204 | |
| -1503000303 | | -1503000304 | |
| -1504000203 | | -1504000204 | |
| -1504000303 | | -1504000304 | |
| -1504000403 | | -1504000404 | |
| -1505000253 | | -1505000254 | |
| -1505000303 | | -1505000304 | |
| -1505000503 | | -1505000504 | |
| -1506000303 | | -1506000304 | |
| -1506000403 | | -1506000404 | |
| -2002000203 | | -2002000204 | |
| -2002500253 | | -2002500254 | |
| -2003000203 | | -2003000204 | |
| -2003000303 | | -2003000304 | |
| -2003500353 | | -2003500354 | |
| -2004000203 | | -2004000204 | |
| -2004000303 | | -2004000304 | |
| -2004000403 | | -2004000404 | |
| -2005000203 | | -2005000204 | |
| -2005000253 | | -2005000254 | |
| -2005000303 | | -2005000304 | |
| -2005000503 | | -2005000504 | |
| -2006000303 | | -2006000304 | |
| -2006000403 | | -2006000404 | |
| -2006000603 | | -2006000604 | |
| -2008000403 | | -2008000404 | |
| -2008000603 | | -2008000604 | |
| -2008000803 | | -2008000804 | |
| -2010000403 | | -2010000404 | |
| -2010000503 | | -2010000504 | |
| -2010000603 | | -2010000604 | |
| -2010001003 | | -2010001004 | |
| -3003000303 | | -3003000304 | |
| -3004000403 | | -3004000404 | |
| -3005000303 | | -3005000304 | |
| -3005000503 | | -3005000504 | |
| -3006000403 | | -3006000404 | |
| -3006000603 | | -3006000604 | |
| -3008000403 | | -3008000404 | |
| -3008000603 | | -3008000604 | |
| -3008000803 | | -3008000804 | |
| -3010000403 | | -3010000404 | |
| -3010000503 | | -3010000504 | |
| -3010000603 | | -3010000604 | |
| -3010000803 | | -3010000804 | |
| -3010001003 | | -3010001004 | |

прямоугольная /
квадратная нержа-
вующая труба



Preis auf Anfrage

цена по запросу