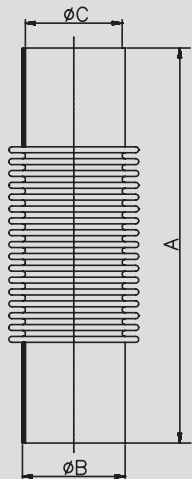


Kompensator DIN

компенсатор DIN



Art.-Nr. 70400-

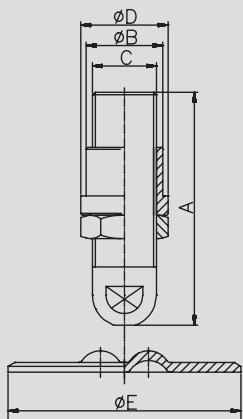
AISI 304/304L-1.4301/1.4307

AISI 316L-1.4404

DN	A	B	C	D	E	Gew.	Art.-Nr.	Preis	Art.-Nr.	Preis	Art.-Nr.	Preis	Art.-Nr.	Preis
mm	mm	mm	mm	mm	mm	kg	poliert	EUR	matt	EUR	poliert	EUR	matt	EUR
25	200,0	28,0	25,0				-0251		-0252		-0253		-0254	
32	200,0	34,0	31,0				-0321		-0322		-0323		-0324	
40	200,0	40,0	37,0				-0401		-0402		-0403		-0404	
50	200,0	52,0	49,0				-0501		-0502		-0503		-0504	
65	200,0	70,0	66,0				-0651		-0652		-0653		-0654	
80	200,0	85,0	81,0				-0801		-0802		-0803		-0804	
100	300,0	104,0	100,0				-1001		-1002		-1003		-1004	

Kalottenfuß
kpl. mit Teller

сферическая ножка
в сборе с чашкой



Art.-Nr. 70501-

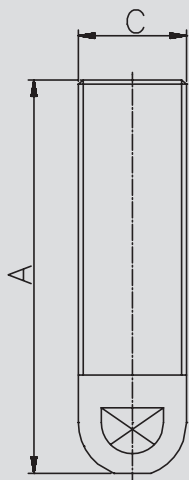
AISI 304-1.4301

DN	A	B	C	D	E	Gew.	Art.-Nr.	Preis
mm	mm	mm	mm	mm	mm	kg	blank	EUR
0,5"	100,0	29,0	G1/2"	35,0	120,0		-0121	
0,75"	100,0	32,0	G3/4"	38,0	120,0		-0341	
1"	120,0	39,5	G1"	45,0	120,0		-1001	
1,25"	150,0	49,5	G1.1/4"	55,0	160,0		-1141	
1,5"	150,0	57,0	G1.1/2"	60,0	160,0		-1121	

G: Rohrgewinde ISO 228-1
G: резьба трубная ISO 228-1

Kalottenfuß

сферическая ножка



Art.-Nr. 70601-

AISI 304-1.4301

DN	A	B	C	D	E	Gew.	Art.-Nr.	Preis
mm	mm	mm	mm	mm	mm	kg	blank	EUR
0,5"	100,0		G1/2"				-0121	
0,75"	100,0		G3/4"				-0341	
1"	120,0		G1"				-1001	
1,25"	150,0		G1.1/4"				-1141	
1,5"	150,0		G1.1/2"				-1121	

G: Rohrgewinde ISO 228-1
G: резьба трубная ISO 228-1

Art.-Nr. 70701-

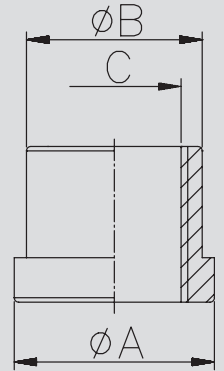
AISI 304-1.4301

DN	A	B	C	D	E	Gew.
mm	mm	mm	mm	mm	mm	kg
0,5"	35,0	29,0	G1/2"			
0,75"	38,0	32,0	G3/4"			
1"	45,0	39,5	G1"			
1,25"	55,0	49,5	G1.1/4"			
1,5"	65,0	57,0	G1.1/2"			

Art.-Nr.	Preis
blank	EUR
-0121	
-0341	
-1001	
-1141	
-1121	

Kalottenmuffe

сферическая муфта



G: Rohrgewinde ISO 228-1

G: резьба трубная ISO 228-1

Art.-Nr. 70801-

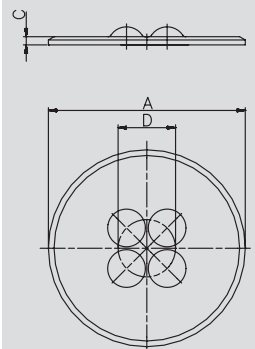
AISI 304-1.4301

DN	A	B	C	D	E	Gew.
mm	mm	mm	mm	mm	mm	kg
1"	120,0	5,0	35,0			
1,5"	160,0	8,0	50,0			

Art.-Nr.	Preis
blank	EUR
-1001	
-1121	

Kalottenteller

сферическая чашка



Art.-Nr. 70901-

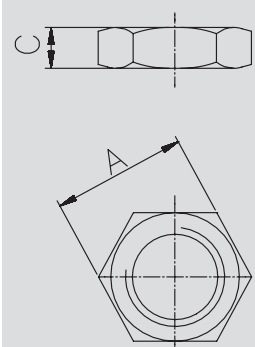
AISI 304-1.4301

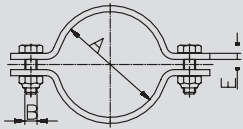
DN	A	B	C	D	E	Gew.
mm	mm	mm	mm	mm	mm	kg
0,5"	32,0		8,0			0,030
0,75"	36,0		9,0			0,040
1"	41,0		11,0			0,070
1,25"	55,0		12,0			0,100
1,5"	60,0		15,0			0,120

Art.-Nr.	Preis
blank	EUR
-0121	
-0341	
-1001	
-1141	
-1121	

Kontermutter für Kalottenfuß

сферическая гайка для сферической ножки



Rohrschelle DIN
ohne Schaftтрубный хомут DIN
без стойки

Art.-Nr. 73400-

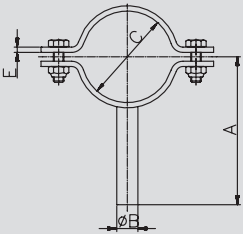
DN	A	B	C	D	E	Gew.
mm	mm	mm	mm	mm	mm	kg
10	12,0	M6x20			20x2	0,030
15	18,0	M6x20			20x2	0,040
20	22,0	M6x20			20x3	0,060
25	28,0	M6x20			20x3	0,060
32	34,0	M6x20			20x3	0,080
40	40,0	M6x20			20x3	0,080
50	52,0	M6x20			20x3	0,100
65	70,0	M6x20			20x3	0,130
80	85,0	M6x20			25x3	0,190
100	104,0	M6x20			25x3	0,240
125	129,0	M8x27			30x3	0,370
150	154,0	M8x27			30x3	0,420
200	204,0	M10x40			40x4	0,000
250	254,0	M10x40			40x4	0,000

E: Flachmaterial

E: полосовая сталь

AISI 304-1.4301

Art.-Nr.	Preis	Art.-Nr.	Preis
poliert	EUR	matt	EUR
-0101		-0102	
-0151		-0152	
-0201		-0202	
-0251		-0252	
-0321		-0322	
-0401		-0402	
-0501		-0502	
-0651		-0652	
-0801		-0802	
-1001		-1002	
-1251		-1252	
-1501		-1502	
-2001		-2002	
-2501		-2502	

Rohrschelle DIN
mit Schaftтрубный хомут DIN
со стойкой

Art.-Nr. 73500-

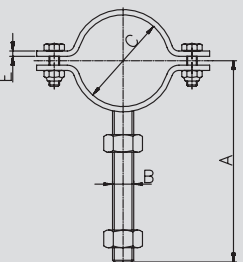
DN	A	B	C	D	E	Gew.
mm	mm	mm	mm	mm	mm	kg
10	62,5	8,0	12,0		20x2	0,060
15	65,5	8,0	18,0		20x2	0,070
20	68,5	8,0	22,0		20x3	0,090
25	71,5	10,0	28,0		20x3	0,110
32	74,5	10,0	34,0		20x3	0,120
40	77,5	10,0	40,0		20x3	0,130
50	83,5	12,0	52,0		20x3	0,160
65	92,5	12,0	70,0		20x3	0,190
80	100,0	12,0	85,0		25x3	0,250
100	109,5	12,0	104,0		25x3	0,290
125	140,5	16,0	129,0		30x3	0,510
150	179,5	16,0	154,0		30x3	1,035
200	226,0	20,0	204,0		40x4	0,000
250	251,0	20,0	254,0		40x4	0,000

E: Flachmaterial

E: полосовая сталь

AISI 304-1.4301

Art.-Nr.	Preis	Art.-Nr.	Preis
poliert	EUR	matt	EUR
-0101		-0102	
-0151		-0152	
-0201		-0202	
-0251		-0252	
-0321		-0322	
-0401		-0402	
-0501		-0502	
-0651		-0652	
-0801		-0802	
-1001		-1002	
-1251		-1252	
-1501		-1502	
-2001		-2002	
-2501		-2502	

Rohrschelle DIN
mit Gewindegenschaftтрубный хомут DIN
с резьбовой стойкой

Art.-Nr. 73600-

DN	A	B	C	D	E	Gew.
mm	mm	mm	mm	mm	mm	kg
10	92,5	M8	12,0		20x2	0,040
15	95,5	M8	18,0		20x2	0,065
20	98,5	M8	22,0		20x3	0,080
25	101,5	M10	28,0		20x3	0,100
32	104,5	M10	34,0		20x3	0,110
40	107,5	M10	40,0		20x3	0,115
50	113,5	M12	52,0		20x3	0,130
65	122,5	M12	70,0		20x3	0,160
80	130,0	M12	85,0		25x3	0,280
100	139,5	M12	104,0		25x3	0,320
125	167,0	M16	129,0		30x3	0,480
150	200,0	M16	154,0		30x3	1,035
200	246,0	M20	204,0		40x4	0,000

E: Flachmaterial

E: полосовая сталь

AISI 304-1.4301

Art.-Nr.	Preis	Art.-Nr.	Preis
poliert	EUR	matt	EUR
-0101		-0102	
-0151		-0152	
-0201		-0202	
-0251		-0252	
-0321		-0322	
-0401		-0402	
-0501		-0502	
-0651		-0652	
-0801		-0802	
-1001		-1002	
-1251		-1252	
-1501		-1502	
-2001		-2002	

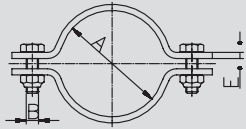
Rohrschelle ISO
ohne Schaftтрубный хомут ISO
без стойки

Art.-Nr. 73000-

DN	A	B	C	D	E	Gew.
	mm	mm	mm	mm	mm	
20	26,9	M6x20			25x3	
25	33,7	M6x20			25x3	
32	42,4	M6x20			25x3	
40	48,3	M6x20			25x3	
50	60,3	M6x20			25x3	
65	76,1	M6x20			25x3	
80	88,9	M6x20			25x3	
100	114,3	M6x20			25x3	
125	139,7	M6x20			25x3	

AISI 304-1.4301

Art.-Nr.	Preis	Art.-Nr.	Preis
-0201		-0202	
-0251		-0252	
-0321		-0322	
-0401		-0402	
-0501		-0502	
-0651		-0652	
-0801		-0802	
-1001		-1002	
-1251		-1252	



E: Flachmaterial

E: полосовая сталь

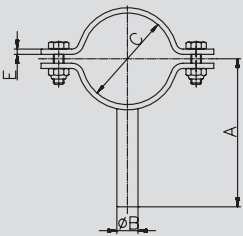
Rohrschelle ISO
mit Schaftтрубный хомут ISO
со стойкой

Art.-Nr. 73100-

DN	A	B	C	D	E	Gew.
	mm	mm	mm	mm	mm	
20	71,0	10,0	26,9		25x3	
25	74,5	10,0	33,7		25x3	
32	79,0	10,0	42,4		25x3	
40	82,0	10,0	48,3		25x3	
50	88,0	12,0	60,3		25x3	
65	95,5	12,0	76,1		25x3	
80	102,0	12,0	88,9		25x3	
100	115,0	12,0	114,3		25x3	

AISI 304-1.4301

Art.-Nr.	Preis	Art.-Nr.	Preis
-0201		-0202	
-0251		-0252	
-0321		-0322	
-0401		-0402	
-0501		-0502	
-0651		-0652	
-0801		-0802	
-1001		-1002	



E: Flachmaterial

E: полосовая сталь

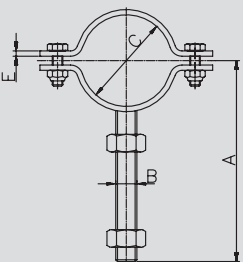
Rohrschelle ISO
mit Gewindegenschaftтрубный хомут ISO
с резьбовой стойкой

Art.-Nr. 73200-

DN	A	B	C	D	E	Gew.
	mm	mm	mm	mm	mm	
25	104,5	M10	33,7		25x3	0,140
32	109,0	M10	42,4		25x3	0,150
40	112,0	M10	48,3		25x3	0,160
50	118,0	M12	60,3		25x3	0,200
65	125,5	M12	76,1		25x3	0,220
80	132,0	M12	88,9		25x3	0,300
100	145,0	M12	114,3		25x3	0,330

AISI 304-1.4301

Art.-Nr.	Preis	Art.-Nr.	Preis
-0251		-0252	
-0321		-0322	
-0401		-0402	
-0501		-0502	
-0651		-0652	
-0801		-0802	
-1001		-1002	



E: Flachmaterial

E: полосовая сталь

7.07. Rohrschelle DIN klappbar

7.07. трубный хомут DIN накладной

Art.-Nr. 71400-

DN	A	B	C	D	E	Gew.
mm	mm	mm	mm	mm	mm	kg
20	22,0	M8			25x2	
25	28,0	M8			25x2	
32	34,0	M8			25x2	
40	40,0	M10			25x2	
50	52,0	M10			30x3	
65	70,0	M10			30x3	
80	85,0	M10			30x3	
100	104,0	M10			30x3	

E: Flachmaterial

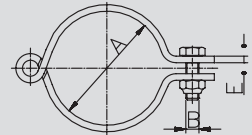
E: полосовая сталь

AISI 304-1.4301

Art.-Nr.	Preis	Art.-Nr.	Preis
poliert	EUR	matt	EUR
-0201		-0202	
-0251		-0252	
-0321		-0322	
-0401		-0402	
-0501		-0502	
-0651		-0652	
-0801		-0802	
-1001		-1002	

Rohrschelle DIN
ohne Schaft
- klappbar

трубный хомут DIN
без стойки
- складной



Art.-Nr. 71500-

DN	A	B	C	D	E	Gew.
mm	mm	mm	mm	mm	mm	kg
20	22,0	8,0	68,5		25x2	
25	28,0	10,0	71,5		25x2	
32	34,0	10,0	74,5		25x2	
40	40,0	10,0	77,5		25x2	
50	52,0	12,0	83,5		30x3	
65	70,0	12,0	92,5		30x3	
80	85,0	12,0	100,0		30x3	
100	104,0	12,0	109,5		30x3	

E: Flachmaterial

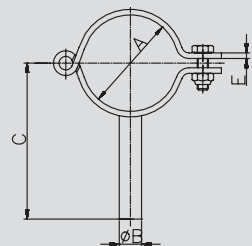
E: полосовая сталь

AISI 304-1.4301

Art.-Nr.	Preis	Art.-Nr.	Preis
poliert	EUR	matt	EUR
-0201		-0202	
-0251		-0252	
-0321		-0322	
-0401		-0402	
-0501		-0502	
-0651		-0652	
-0801		-0802	
-1001		-1002	

Rohrschelle DIN
mit Schaft
- klappbar

трубный хомут DIN
со стойкой
- складной



Art.-Nr. 71600-

DN	A	B	C	D	E	Gew.
mm	mm	mm	mm	mm	mm	kg
20	22,0	M8	98,5		25x2	
25	28,0	M10	101,5		25x2	
32	34,0	M10	104,5		25x2	
40	40,0	M10	107,5		25x2	
50	52,0	M12	113,5		30x3	
65	70,0	M12	122,5		30x3	
80	85,0	M12	130,0		30x3	
100	104,0	M12	139,5		30x3	

E: Flachmaterial

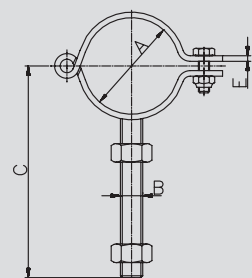
E: полосовая сталь

AISI 304-1.4301

Art.-Nr.	Preis	Art.-Nr.	Preis
poliert	EUR	matt	EUR
-0201		-0202	
-0251		-0252	
-0321		-0322	
-0401		-0402	
-0501		-0502	
-0651		-0652	
-0801		-0802	
-1001		-1002	

Rohrschelle DIN
mit Gewindeschaft
- klappbar

трубный хомут DIN
с резьбовой стойкой
- складной

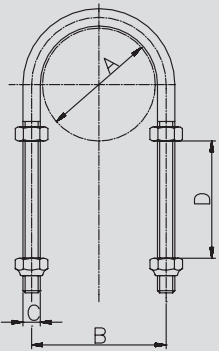


7.08. Rohrspannbügel

7.08. стяжной трубный хомут

Rohrspannbügel kpl.
DIN
Standard (54 mm)

стяжной хомут тру-
бный в сборе DIN
стандарт (54 мм)



Art.-Nr. 73700-

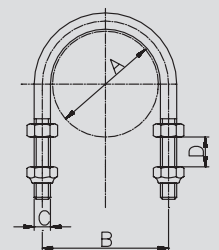
DN	A	B	C	D	E	Gew.
mm	mm	mm	mm	mm	mm	kg
10	12,0	20,0	M6	54,0		
15	18,0	26,0	M6	54,0		
20	22,0	30,0	M6	54,0		
25	28,0	36,0	M6	54,0		0,048
32	34,0	42,0	M6	54,0		0,048
40	40,0	50,0	M8	54,0		0,095
50	52,0	62,0	M8	54,0		0,095
65	70,0	80,0	M8	54,0		0,130
80	85,0	97,0	M10	54,0		0,140
100	104,0	116,0	M10	54,0		0,245
125	129,0	141,0	M10	54,0		0,230
150	154,0	168,0	M12	54,0		0,230

AISI 304-1.4301

Art.-Nr.	Preis	Art.-Nr.	Preis
poliert	EUR	matt	EUR
-0101		-0102	
-0151		-0152	
-0201		-0202	
-0251		-0252	
-0321		-0322	
-0401		-0402	
-0501		-0502	
-0651		-0652	
-0801		-0802	
-1001		-1002	
-1251		-1252	
-1501		-1502	

Rohrspannbügel kpl.
DIN
kurz (8 mm)

стяжной хомут тру-
бный в сборе DIN
короткий (8 мм)



Art.-Nr. 73710-

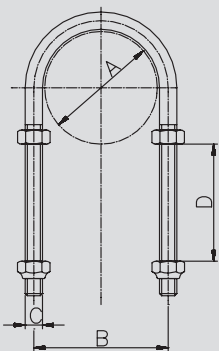
DN	A	B	C	D	E	Gew.
mm	mm	mm	mm	mm	mm	kg
10	12,0	20,0	M6	8,0		
15	18,0	26,0	M6	8,0		
20	22,0	30,0	M6	8,0		
25	28,0	36,0	M6	8,0		
32	34,0	42,0	M6	8,0		
40	40,0	50,0	M8	8,0		
50	52,0	62,0	M8	8,0		
65	70,0	80,0	M8	8,0		
80	85,0	97,0	M10	8,0		
100	104,0	116,0	M10	8,0		
125	129,0	141,0	M10	8,0		
150	154,0	168,0	M12	8,0		

AISI 304-1.4301

Art.-Nr.	Preis	Art.-Nr.	Preis
poliert	EUR	matt	EUR
-0101		-0102	
-0151		-0152	
-0201		-0202	
-0251		-0252	
-0321		-0322	
-0401		-0402	
-0501		-0502	
-0651		-0652	
-0801		-0802	
-1001		-1002	
-1251		-1252	
-1501		-1502	

Rohrspannbügel kpl.
DIN
lang (100 mm)

стяжной хомут тру-
бный в сборе DIN
длинный (100 мм)



Art.-Nr. 73720-

DN	A	B	C	D	E	Gew.
mm	mm	mm	mm	mm	mm	kg
10	12,0	20,0	M6	100,0		
15	18,0	26,0	M6	100,0		
20	22,0	30,0	M6	100,0		
25	28,0	36,0	M6	100,0		
32	34,0	42,0	M6	100,0		
40	40,0	50,0	M8	100,0		
50	52,0	62,0	M8	100,0		
65	70,0	80,0	M8	100,0		
80	85,0	97,0	M10	100,0		
100	104,0	116,0	M10	100,0		
125	129,0	141,0	M10	100,0		

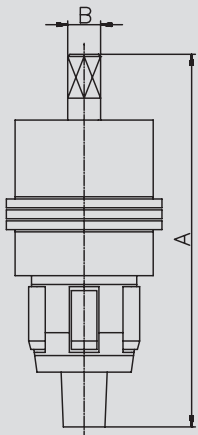
AISI 304-1.4301

Art.-Nr.	Preis	Art.-Nr.	Preis
poliert	EUR	matt	EUR
-0101		-0102	
-0151		-0152	
-0201		-0202	
-0251		-0252	
-0321		-0322	
-0401		-0402	
-0501		-0502	
-0651		-0652	
-0801		-0802	
-1001		-1002	
-1251		-1252	
-1501		-1502	

Preis auf Anfrage
цена по запросу

Rohrwalze DIN/Zoll

инструмент для
вальцовки
DIN/дюйм



Art.-Nr. 7380-

DN	A	B	C	D	E	Gew.
mm	mm	mm	mm	mm	mm	kg
10	118,0	8,0				0,310
15	129,0	8,0				0,330
20	140,0	8,0				0,360
25	159,0	12,0				0,670
32	171,0	12,0				1,030
40	176,0	14,0				1,430
50	180,0	14,0				2,280
65	205,0	16,0				4,250
80	238,0	22,0				7,900
100	240,0	22,0				0,500
1"	159,0	12,0				0,670
1,5"	176,0	14,0				1,430
2"	180,0	14,0				2,280
2,5"	205,0	16,0				4,250
3"	238,0	22,0				7,900
4"	240,0	22,0				10,500

Knarre separat lieferbar

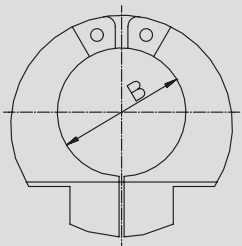
трещётка поставляется отдельно

AISI 304-1.4301

Art.-Nr.	Preis
EUR	
-00100	
-00150	
-00200	
-00250	
-00320	
-00400	
-00500	
-00650	
-00800	
-01000	
-11000	
-11120	
-12000	
-12120	
-13000	
-14000	

Rohrsägewerkzeug
DIN/Zoll

инструмент для
резки труб
DIN/дюйм



Art.-Nr. 7400-

DN	A	B	C	D	E	Gew.
mm	mm	mm	mm	mm	mm	kg
10		12,0				0,570
15		18,0				0,550
20		22,0				0,530
25		28,0				0,710
32		34,0				0,640
40		40,0				0,830
50		52,0				0,980
65		70,0				1,940
80		85,0				2,150
100		104,0				2,690
1"		25,4				0,750
1,5"		38,1				0,830
2"		50,8				0,980
2,5"		63,5				1,940
3"		76,2				2,150
4"		101,6				2,690

AISI 304-1.4301

Art.-Nr.	Preis
EUR	
-00100	
-00150	
-00200	
-00250	
-00320	
-00400	
-00500	
-00650	
-00800	
-01000	
-11000	
-11120	
-12000	
-12120	
-13000	
-14000	

Gelenk-
Hakenschlüssel

накидной крючков-
ый ключ



Art.-Nr. 75000-

DN	A	B	C	D	E	Gew.
mm	mm	mm	mm	mm	mm	kg
10-20					Typ35/65	0,090
25-40					Typ60/90	0,290
50-100					Typ90/155	0,430
125-150					Typ155/230	0,580

AISI 304-1.4301

Art.-Nr.	Preis
EUR	
-0100020	
-0250040	
-0500100	
-1250150	