

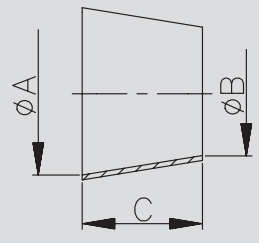
2.01. Reduzierstück mit Schweißenden

2.01. Переходник со сварными концами

Art.-Nr. 22200-							AISI 304/304L-1.4301/1.4307				AISI 316L-1.4404			
DN	A	B	C	D	E	Gew.	Art.-Nr.	Preis	Art.-Nr.	Preis	Art.-Nr.	Preis	Art.-Nr.	Preis
mm	mm	mm	mm	mm	mm	kg	poliert	EUR	matt	EUR	poliert	EUR	matt	EUR
15-10	15,0	9,0	16,0			0,010	-0151010		-0152010		-0153010		-0154010	
20-10	19,0	9,0	25,0			0,010	-0201010		-0202010		-0203010		-0204010	
20-15	19,0	15,0	17,0			0,010	-0201015		-0202015		-0203015		-0204015	
25-10	25,0	9,0	29,5			0,020	-0251010		-0252010		-0253010		-0254010	
25-15	25,0	15,0	17,0			0,010	-0251015		-0252015		-0253015		-0254015	
25-20	25,0	19,0	19,5			0,010	-0251020		-0252020		-0253020		-0254020	
32-15	31,0	15,0	22,0			0,020	-0321015		-0322015		-0323015		-0324015	
32-20	31,0	19,0	22,0			0,020	-0321020		-0322020		-0323020		-0324020	
32-25	31,0	25,0	20,0			0,020	-0321025		-0322025		-0323025		-0324025	
40-15	37,0	15,0	45,0			0,040	-0401015		-0402015		-0403015		-0404015	
40-20	37,0	19,0	33,5			0,030	-0401020		-0402020		-0403020		-0404020	
40-25	37,0	25,0	28,0			0,030	-0401025		-0402025		-0403025		-0404025	
40-32	37,0	31,0	28,0			0,030	-0401032		-0402032		-0403032		-0404032	
50-25	49,0	25,0	44,0			0,060	-0501025		-0502025		-0503025		-0504025	
50-32	49,0	31,0	32,0			0,040	-0501032		-0502032		-0503032		-0504032	
50-40	49,0	37,0	37,0			0,060	-0501040		-0502040		-0503040		-0504040	
65-25	66,0	25,0	58,5			0,140	-0651025		-0652025		-0653025		-0654025	
65-32	66,0	31,0	52,0			0,130	-0651032		-0652032		-0653032		-0654032	
65-40	66,0	37,0	38,0			0,110	-0651040		-0652040		-0653040		-0654040	
65-50	66,0	49,0	31,0			0,090	-0651050		-0652050		-0653050		-0654050	
80-25	81,0	25,0	88,5			0,245	-0801025		-0802025		-0803025		-0804025	
80-32	81,0	31,0	83,0			0,243	-0801032		-0802032		-0803032		-0804032	
80-40	81,0	37,0	61,0			0,210	-0801040		-0802040		-0803040		-0804040	
80-50	81,0	49,0	31,5			0,110	-0801050		-0802050		-0803050		-0804050	
80-65	81,0	66,0	31,5			0,120	-0801065		-0802065		-0803065		-0804065	
100-25	100,0	25,0	112,0			0,407	-1001025		-1002025		-1003025		-1004025	
100-32	100,0	31,0	105,5			0,387	-1001032		-1002032		-1003032		-1004032	
100-40	100,0	37,0	91,5			0,350	-1001040		-1002040		-1003040		-1004040	
100-50	100,0	49,0	87,0			0,337	-1001050		-1002050		-1003050		-1004050	
100-65	100,0	66,0	54,0			0,230	-1001065		-1002065		-1003065		-1004065	
100-80	100,0	81,0	38,0			0,160	-1001080		-1002080		-1003080		-1004080	
125-25	125,0	25,0	147,5			0,580	-1251025		-1252025		-1253025		-1254025	
125-32	125,0	31,0	141,0			0,560	-1251032		-1252032		-1253032		-1254032	
125-40	125,0	37,0	127,0			0,520	-1251040		-1252040		-1253040		-1254040	
125-50	125,0	49,0	122,5			0,510	-1251050		-1252050		-1253050		-1254050	
125-65	125,0	66,0	89,5			0,380	-1251065		-1252065		-1253065		-1254065	
125-80	125,0	81,0	61,0			0,320	-1251080		-1252080		-1253080		-1254080	
125-100	125,0	100,0	36,0			0,210	-1251100		-1252100		-1253100		-1254100	
150-65	150,0	66,0	129,0			0,596	-1501065		-1502065		-1503065		-1504065	
150-80	150,0	81,0	93,0			0,540	-1501080		-1502080		-1503080		-1504080	
150-100	150,0	100,0	66,5			0,410	-1501100		-1502100		-1503100		-1504100	
150-125	150,0	125,0	40,0			0,270	-1501125		-1502125		-1503125		-1504125	
200-100	200,0	100,0	134,0			1,017	-2001100		-2002100		-2003100		-2004100	
200-125	200,0	125,0	107,5			0,877	-2001125		-2002125		-2003125		-2004125	
200-150	200,0	150,0	68,0			0,580	-2001150		-2002150		-2003150		-2004150	

Reduzierstück
DIN SS
konzentrisch

Переходник DIN СС
концентрический



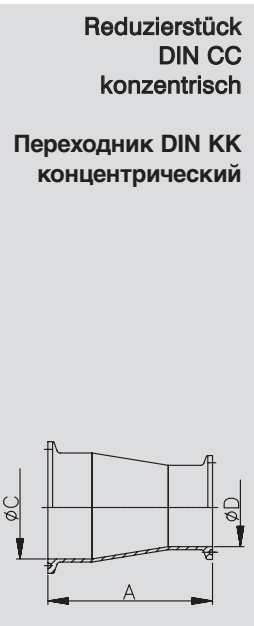
2.03. Reduzierstück mit Schweißenden und Anschlüssen

2.03. Переходник со сварными концами и подключениями

Art.-Nr. 22206-								AISI 304/304L-1.4301/1.4307				AISI 316L-1.4404			
DN	A	B	C	D	E	Gew.	Art.-Nr.	Preis	Art.-Nr.	Preis	Art.-Nr.	Preis	Art.-Nr.	Preis	
mm	mm	mm	mm	mm	mm	kg	poliert	EUR	matt	EUR	poliert	EUR	matt	EUR	
1,5-1"	35,1	22,9	24,0			0,030	-1121100		-1122100		-1123100		-1124100		
2-1"	47,8	22,9	47,5			0,080	-2001100		-2002100		-2003100		-2004100		
2-1,5"	47,8	35,1	24,0			0,050	-2001112		-2002112		-2003112		-2004112		
2,5-1"	60,5	22,9	70,0			0,150	-2121100		-2122100		-2123100		-2124100		
2,5-1,5"	60,5	35,1	46,5			0,110	-2121112		-2122112		-2123112		-2124112		
2,5-2"	60,5	47,8	23,0			0,060	-2121200		-2122200		-2123200		-2124200		
3-1"	72,1	22,9	92,0			0,200	-3001100		-3002100		-3003100		-3004100		
3-1,5"	72,1	35,1	68,0			0,200	-3001112		-3002112		-3003112		-3004112		
3-2"	72,1	47,8	44,5			0,140	-3001200		-3002200		-3003200		-3004200		
3-2,5"	72,1	60,5	22,0			0,080	-3001212		-3002212		-3003212		-3004212		
4-2"	97,6	47,8	92,0			0,340	-4001200		-4002200		-4003200		-4004200		
4-2,5"	97,6	60,5	69,5			0,270	-4001212		-4002212		-4003212		-4004212		
4-3"	97,6	72,1	48,0			0,200	-4001300		-4002300		-4003300		-4004300		



Art.-Nr. 24400-								AISI 304/304L-1.4301/1.4307				AISI 316L-1.4404			
DN	A	B	C	D	E	Gew.	Art.-Nr.	Preis	Art.-Nr.	Preis	Art.-Nr.	Preis	Art.-Nr.	Preis	
mm	mm	mm	mm	mm	mm	kg	poliert	EUR	matt	EUR	poliert	EUR	matt	EUR	
40-25	70,0		38,0	26,0		0,155	-0401025		-0402025		-0403025		-0404025		
50-25	86,0		50,0	26,0		0,208	-0501025		-0502025		-0503025		-0504025		
50-40	79,0		50,0	38,0		0,184	-0501040		-0502040		-0503040		-0504040		
65-40	86,5		66,0	38,0		0,349	-0651040		-0652040		-0653040		-0654040		
65-50	79,5		66,0	50,0		0,365	-0651050		-0652050		-0653050		-0654050		
80-65	86,0		81,0	66,0		0,537	-0801065		-0802065		-0803065		-0804065		
100-65	107,0		100,0	66,0		0,637	-1001065		-1002065		-1003065		-1004065		
100-80	93,0		100,0	81,0		0,609	-1001080		-1002080		-1003080		-1004080		



Art.-Nr. 25500-								AISI 304/304L-1.4301/1.4307				AISI 316L-1.4404			
DN	A	B	C	D	E	Gew.	Art.-Nr.	Preis	Art.-Nr.	Preis	Art.-Nr.	Preis	Art.-Nr.	Preis	
mm	mm	mm	mm	mm	mm	kg	poliert	EUR	matt	EUR	poliert	EUR	matt	EUR	
32-25	70,0		26,0	32,0	Rd52x1/6"	0,285	-0321025		-0322025		-0323025		-0324025		
40-25	78,0		26,0	38,0	Rd52x1/6"	0,315	-0401025		-0402025		-0403025		-0404025		
40-32	81,0		32,0	38,0	Rd58x1/6"	0,345	-0401032		-0402032		-0403032		-0404032		
50-32	86,0		32,0	50,0	Rd58x1/6"	0,395	-0501032		-0502032		-0503032		-0504032		
50-40	92,0		38,0	50,0	Rd65x1/6"	0,436	-0501040		-0502040		-0503040		-0504040		
65-40	95,0		38,0	66,0	Rd65x1/6"	0,573	-0651040		-0652040		-0653040		-0654040		
65-50	90,0		50,0	66,0	Rd78x1/6"	0,655	-0651050		-0652050		-0653050		-0654050		
80-50	91,0		50,0	81,0	Rd78x1/6"	0,816	-0801050		-0802050		-0803050		-0804050		
80-65	95,0		66,0	81,0	Rd95x1/6"	0,959	-0801065		-0802065		-0803065		-0804065		
100-65	121,0		66,0	100,0	Rd95x1/6"	1,212	-1001065		-1002065		-1003065		-1004065		
100-80	112,0		81,0	100,0	Rd110x1/4"	1,329	-1001080		-1002080		-1003080		-1004080		

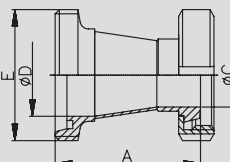


Rd: Rundgewinde
Rd: Резьба круглая

2.04. Reduzierstück mit Anschlüssen

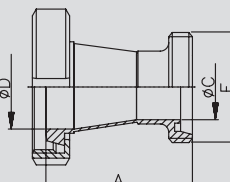
2.04. Переходник с подключением

Reduzierstück DIN GK konzentrisch	Art.-Nr. 25600-							AISI 304/304L-1.4301/1.4307				AISI 316L-1.4404			
	DN	A	B	C	D	E	Gew.	Art.-Nr.	Preis	Art.-Nr.	Preis	Art.-Nr.	Preis	Art.-Nr.	Preis
	mm	mm	mm	mm	mm	mm	kg	poliert	EUR	matt	EUR	poliert	EUR	matt	EUR
32-25	63,0			26,0	32,0	Rd58x1/6"	0,345	-0321025		-0322025		-0323025		-0324025	
40-25	71,0			26,0	38,0	Rd65x1/6"	0,445	-0401025		-0402025		-0403025		-0404025	
40-32	74,0			32,0	38,0	Rd65x1/6"	0,500	-0401032		-0402032		-0403032		-0404032	
50-32	79,0			32,0	50,0	Rd78x1/6"	0,570	-0501032		-0502032		-0503032		-0504032	
50-40	85,0			38,0	50,0	Rd78x1/6"	0,635	-0501040		-0502040		-0503040		-0504040	
65-40	88,0			38,0	66,0	Rd95x1/6"	0,730	-0651040		-0652040		-0653040		-0654040	
65-50	83,0			50,0	66,0	Rd95x1/6"	0,870	-0651050		-0652050		-0653050		-0654050	
80-50	84,0			50,0	81,0	Rd110x1/4"	1,050	-0801050		-0802050		-0803050		-0804050	
80-65	87,0			66,0	81,0	Rd110x1/4"	1,350	-0801065		-0802065		-0803065		-0804065	
100-65	113,0			66,0	100,0	Rd130x1/4"	1,430	-1001065		-1002065		-1003065		-1004065	
100-80	104,0			81,0	100,0	Rd130x1/4"	1,100	-1001080		-1002080		-1003080		-1004080	



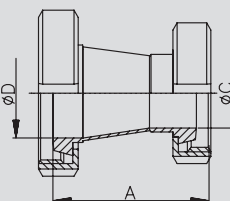
Rd: Rundgewinde
Rd: Резьба круглая

Reduzierstück DIN KG konzentrisch	Art.-Nr. 26500-							AISI 304/304L-1.4301/1.4307				AISI 316L-1.4404			
	DN	A	B	C	D	E	Gew.	Art.-Nr.	Preis	Art.-Nr.	Preis	Art.-Nr.	Preis	Art.-Nr.	Preis
	mm	mm	mm	mm	mm	mm	kg	poliert	EUR	matt	EUR	poliert	EUR	matt	EUR
32-25	63,0			26,0	32,0	Rd52x1/6"	0,430	-0321025		-0322025		-0323025		-0324025	
40-25	71,0			26,0	38,0	Rd52x1/6"	0,500	-0401025		-0402025		-0403025		-0404025	
40-32	74,0			32,0	38,0	Rd58x1/6"	0,510	-0401032		-0402032		-0403032		-0404032	
50-32	79,0			32,0	50,0	Rd58x1/6"	0,650	-0501032		-0502032		-0503032		-0504032	
50-40	85,0			38,0	50,0	Rd65x1/6"	0,850	-0501040		-0502040		-0503040		-0504040	
65-40	87,0			38,0	66,0	Rd65x1/6"	1,000	-0651040		-0652040		-0653040		-0654040	
65-50	82,0			50,0	66,0	Rd78x1/6"	1,050	-0651050		-0652050		-0653050		-0654050	
80-50	83,0			50,0	81,0	Rd78x1/6"	1,150	-0801050		-0802050		-0803050		-0804050	
80-65	87,0			66,0	81,0	Rd95x1/6"	1,500	-0801065		-0802065		-0803065		-0804065	
100-65	111,0			66,0	100,0	Rd95x1/6"	1,920	-1001065		-1002065		-1003065		-1004065	
100-80	102,0			81,0	100,0	Rd110x1/4"	1,950	-1001080		-1002080		-1003080		-1004080	



Rd: Rundgewinde
Rd: Резьба круглая

Reduzierstück DIN KK konzentrisch	Art.-Nr. 26600-							AISI 304/304L-1.4301/1.4307				AISI 316L-1.4404			
	DN	A	B	C	D	E	Gew.	Art.-Nr.	Preis	Art.-Nr.	Preis	Art.-Nr.	Preis	Art.-Nr.	Preis
	mm	mm	mm	mm	mm	mm	kg	poliert	EUR	matt	EUR	poliert	EUR	matt	EUR
32-25	56,0			26,0	32,0		0,450	-0321025		-0322025		-0323025		-0324025	
40-25	64,0			26,0	38,0		0,670	-0401025		-0402025		-0403025		-0404025	
40-32	67,0			32,0	38,0		0,720	-0401032		-0402032		-0403032		-0404032	
50-32	72,0			32,0	50,0		0,970	-0501032		-0502032		-0503032		-0504032	
50-40	78,0			38,0	50,0		1,030	-0501040		-0502040		-0503040		-0504040	
65-40	80,0			38,0	66,0		1,500	-0651040		-0652040		-0653040		-0654040	
65-50	75,0			50,0	66,0		1,340	-0651050		-0652050		-0653050		-0654050	
80-50	76,0			50,0	81,0		1,645	-0801050		-0802050		-0803050		-0804050	
80-65	79,0			66,0	81,0		1,970	-0801065		-0802065		-0803065		-0804065	
100-65	103,0			66,0	100,0		1,990	-1001065		-1002065		-1003065		-1004065	
100-80	94,0			81,0	100,0		2,420	-1001080		-1002080		-1003080		-1004080	



Rd: Rundgewinde
Rd: Резьба круглая

2.05. Verbindungsstück

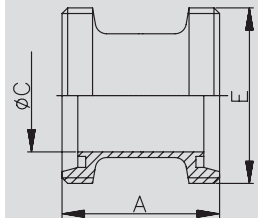
2.05. Соединение

Art.-Nr. 27000-

DN	A	B	C	D	E	Gew.	AISI 304/304L-1.4301/1.4307				AISI 316L-1.4404			
							Art.-Nr.	Preis	Art.-Nr.	Preis	Art.-Nr.	Preis	Art.-Nr.	Preis
mm	mm	mm	mm	mm	mm	kg	poliert	EUR	matt	EUR	poliert	EUR	matt	EUR
10	42,0		10,0		Rd28x1/8"	0,080	-0101		-0102		-0103		-0104	
15	42,0		16,0		Rd34x1/8"	0,100	-0151		-0152		-0153		-0154	
20	48,0		20,0		Rd44x1/6"	0,200	-0201		-0202		-0203		-0204	
25	58,0		26,0		Rd52x1/6"	0,320	-0251		-0252		-0253		-0254	
32	64,0		32,0		Rd58x1/6"	0,350	-0321		-0322		-0323		-0324	
40	66,0		38,0		Rd65x1/6"	0,460	-0401		-0402		-0403		-0404	
50	70,0		50,0		Rd78x1/6"	0,665	-0501		-0502		-0503		-0504	
65	80,0		66,0		Rd95x1/6"	1,040	-0651		-0652		-0653		-0654	
80	90,0		81,0		Rd110x1/4"	1,200	-0801		-0802		-0803		-0804	
100	108,0		100,0		Rd130x1/4"	1,560	-1001		-1002		-1003		-1004	

Rd: Rundgewinde

Rd: Резьба круглая



Verbindungsstück
GG

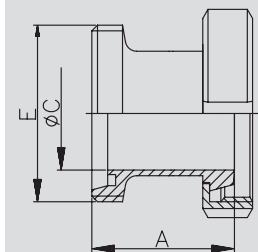
Соединение PP

Art.-Nr. 27100-

DN	A	B	C	D	E	Gew.	AISI 304/304L-1.4301/1.4307				AISI 316L-1.4404			
							Art.-Nr.	Preis	Art.-Nr.	Preis	Art.-Nr.	Preis	Art.-Nr.	Preis
mm	mm	mm	mm	mm	mm	kg	poliert	EUR	matt	EUR	poliert	EUR	matt	EUR
10	38,0		10,0		Rd28x1/8"	0,130	-0101		-0102		-0103		-0104	
15	38,0		16,0		Rd34x1/8"	0,200	-0151		-0152		-0153		-0154	
20	42,0		20,0		Rd44x1/6"	0,290	-0201		-0202		-0203		-0204	
25	51,0		26,0		Rd52x1/6"	0,395	-0251		-0252		-0253		-0254	
32	57,0		32,0		Rd58x1/6"	0,485	-0321		-0322		-0323		-0324	
40	59,0		38,0		Rd65x1/6"	0,600	-0401		-0402		-0403		-0404	
50	63,0		50,0		Rd78x1/6"	1,100	-0501		-0502		-0503		-0504	
65	72,0		66,0		Rd95x1/6"	1,500	-0651		-0652		-0653		-0654	
80	82,0		81,0		Rd110x1/4"	2,070	-0801		-0802		-0803		-0804	
100	98,0		100,0		Rd130x1/4"	3,090	-1001		-1002		-1003		-1004	

Rd: Rundgewinde

Rd: Резьба круглая

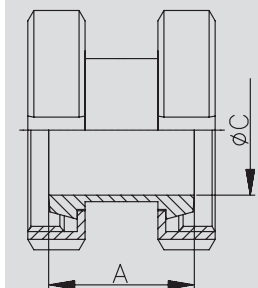


Verbindungsstück
GK

Соединение PK

Art.-Nr. 27200-

DN	A	B	C	D	E	Gew.	AISI 304/304L-1.4301/1.4307				AISI 316L-1.4404			
							Art.-Nr.	Preis	Art.-Nr.	Preis	Art.-Nr.	Preis	Art.-Nr.	Preis
mm	mm	mm	mm	mm	mm	kg	poliert	EUR	matt	EUR	poliert	EUR	matt	EUR
10	34,0		10,0			0,180	-0101		-0102		-0103		-0104	
15	34,0		16,0			0,240	-0151		-0152		-0153		-0154	
20	36,0		20,0			0,320	-0201		-0202		-0203		-0204	
25	44,0		26,0			0,430	-0251		-0252		-0253		-0254	
32	50,0		32,0			0,540	-0321		-0322		-0323		-0324	
40	52,0		38,0			0,700	-0401		-0402		-0403		-0404	
50	56,0		50,0			1,150	-0501		-0502		-0503		-0504	
65	64,0		66,0			1,440	-0651		-0652		-0653		-0654	
80	74,0		81,0			2,570	-0801		-0802		-0803		-0804	
100	88,0		100,0			2,740	-1001		-1002		-1003		-1004	



Verbindungsstück
KK

Соединение KK